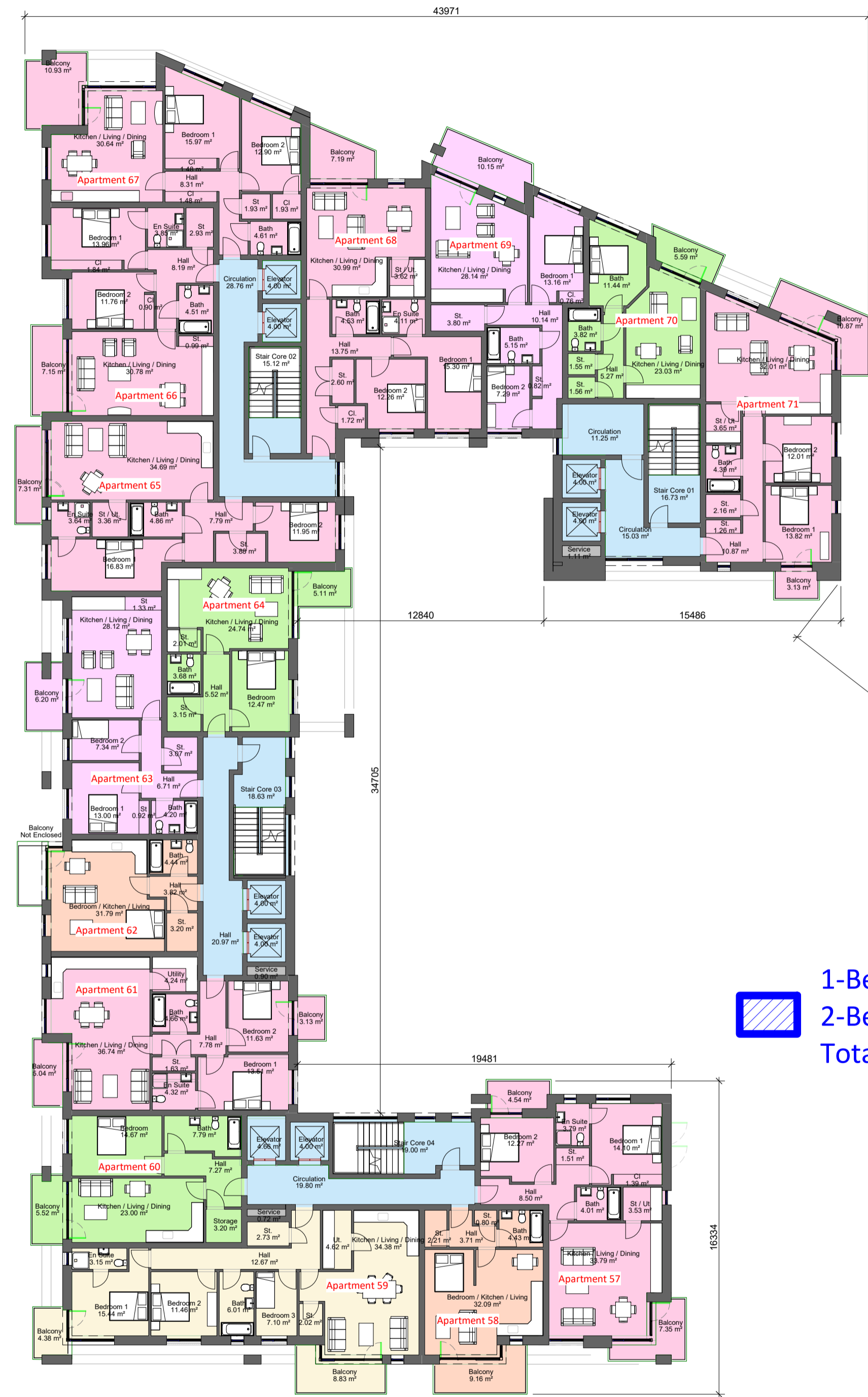
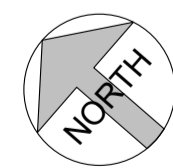


Sector 8B Block 1

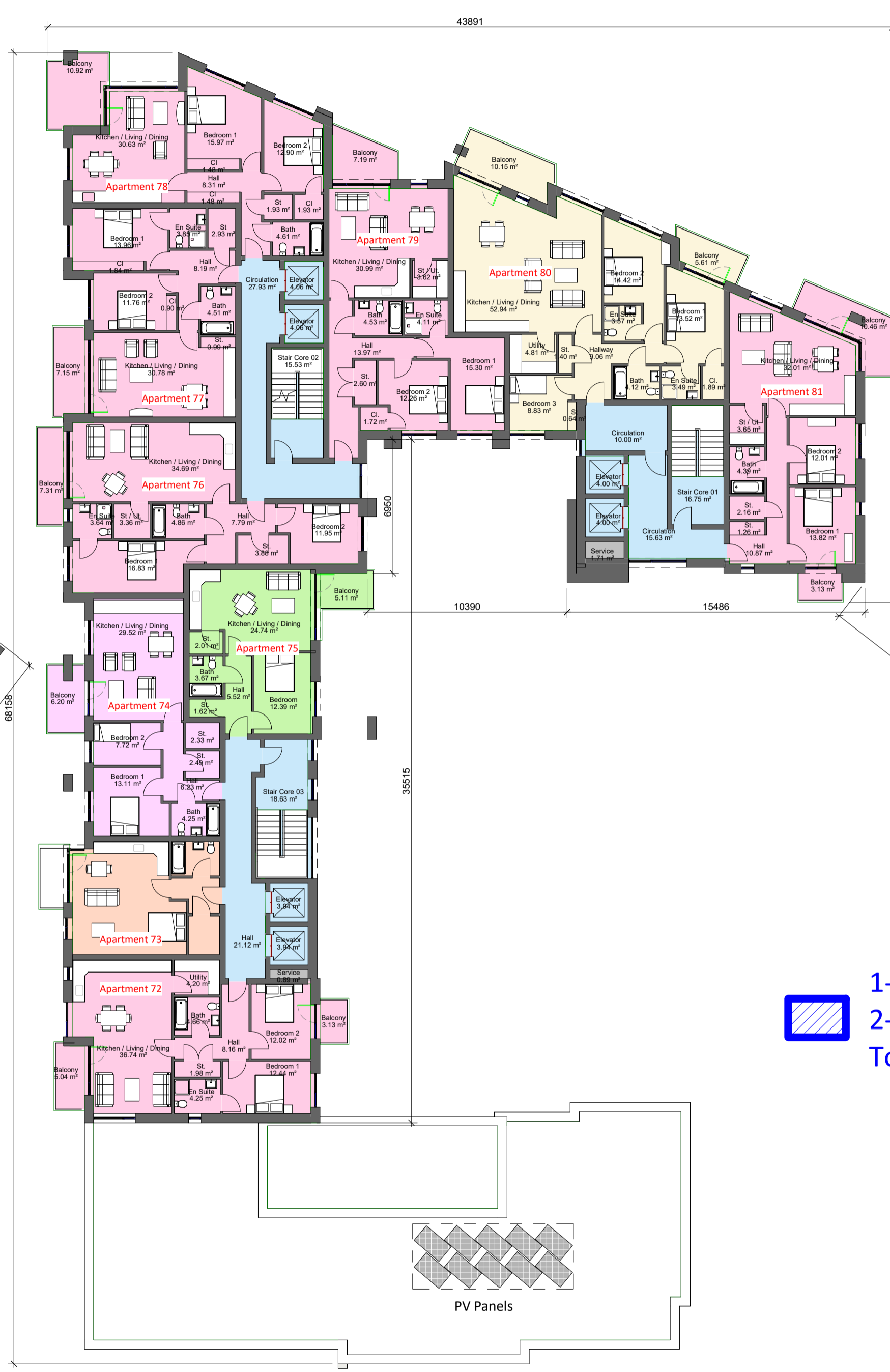


04 Fourth Floor Plan

2 1 : 200

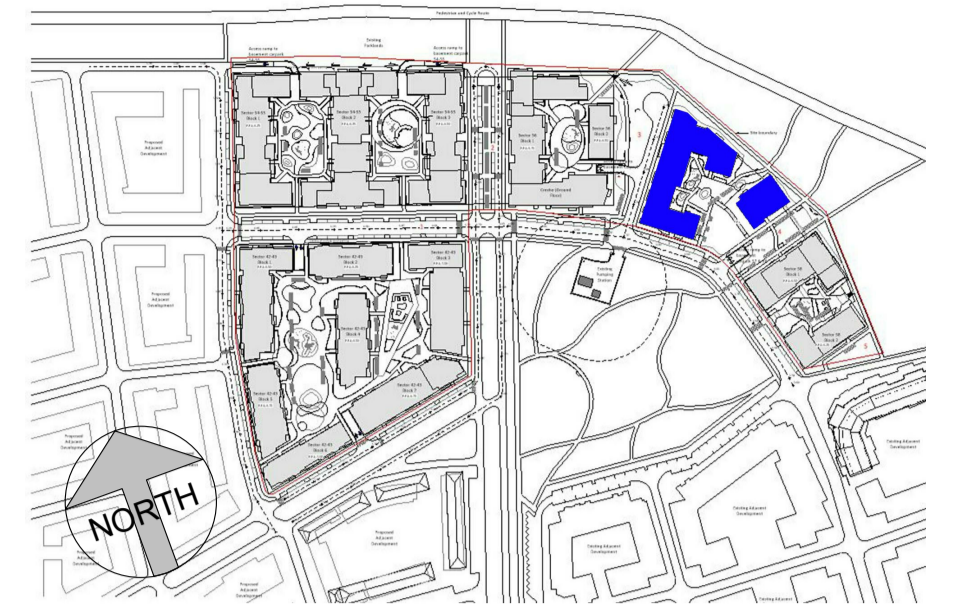
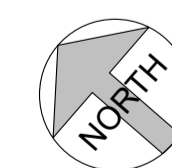


Sector 8B Block 1

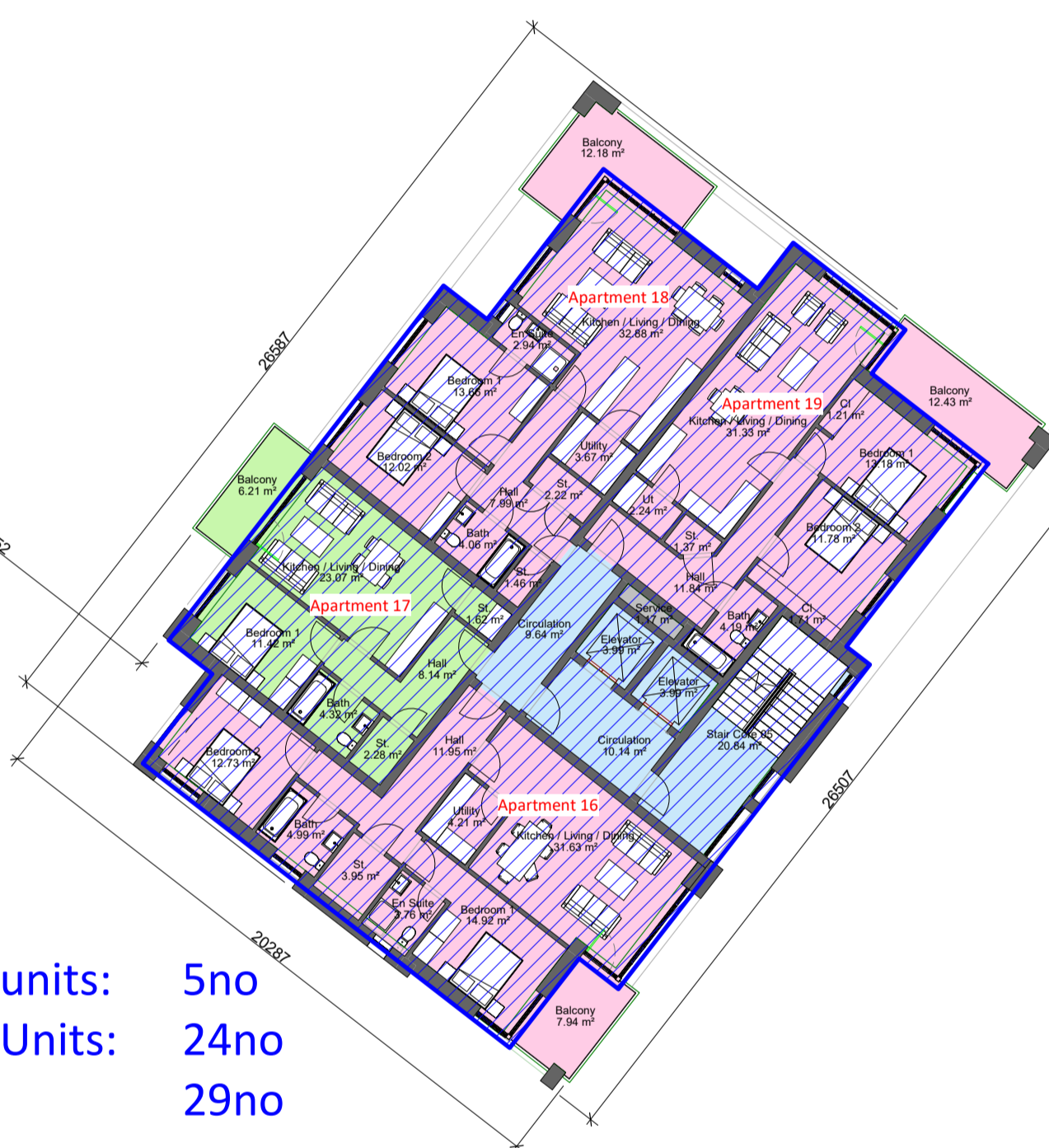


05 Fifth Floor Plan

1 1 : 200

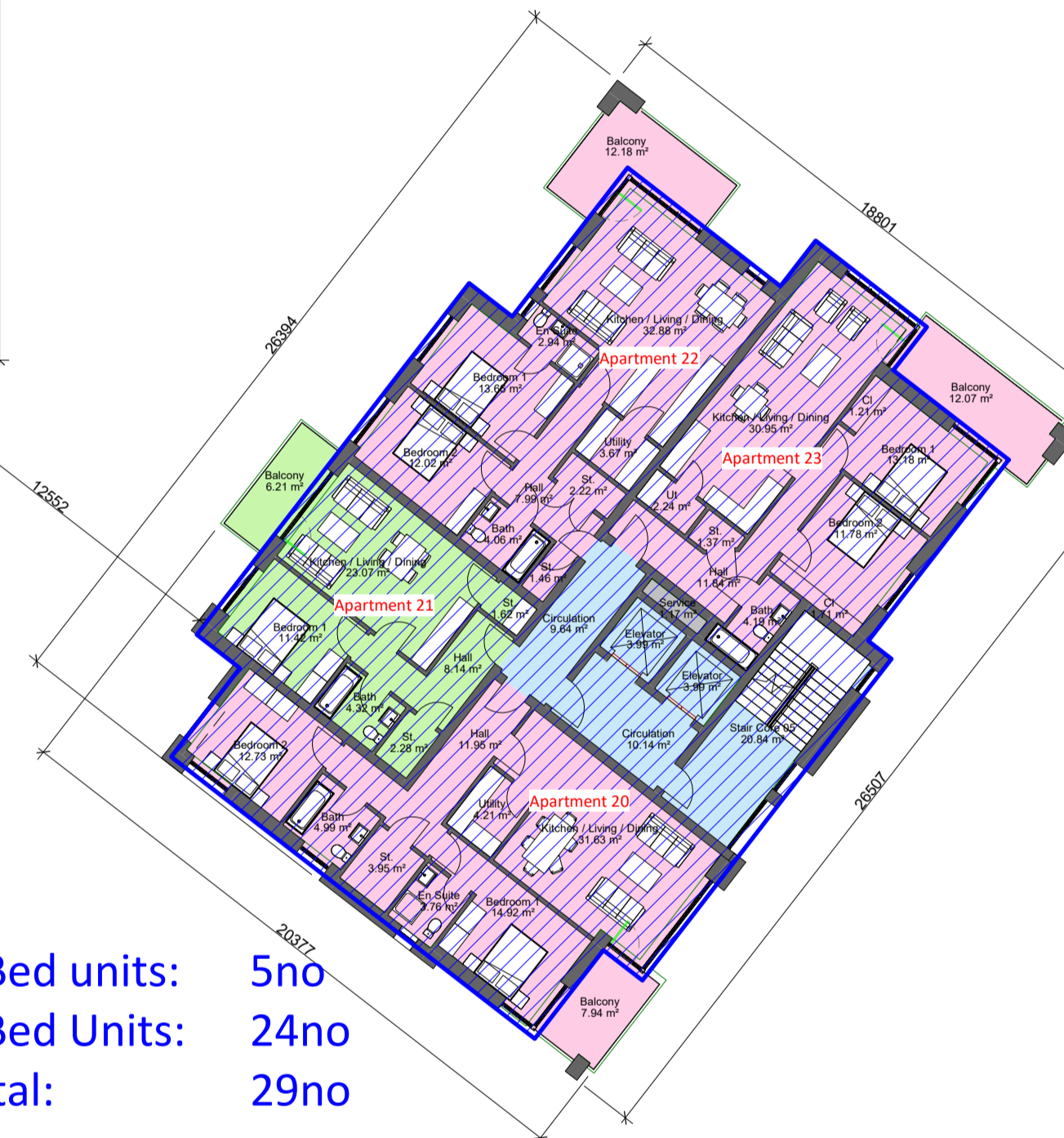


Sector 8B Block 2

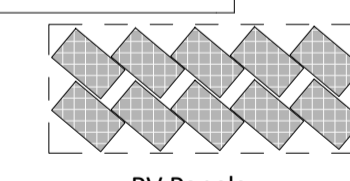


 1-Bed units: 5no
 2-Bed Units: 24no
 Total: 29no

Sector 8B Block 2



 1-Bed units: 5no
 2-Bed Units: 24no
 Total: 29no



Community rooms (sector 8B) 1 room
 Bicycle Storage (sector 8B) at g.l. 120 units

Apartment Schedule Sector 8b						
StairCore	Studio	1 Bed Apt	2 Bed 3 Person	2 Bed 4 Person	3 Bedroom	Total
0	0	0	0	0	0	0
1	0	4	4	5	2	15
2	0	5	0	34	0	39
3	6	5	6	6	0	23
4	5	5	0	4	5	19
5	0	5	0	24	0	29
	11	24	10	73	7	125

Rev. No.	Date	By	Description	STATUS SUITABILITY CODES	NOTES:
P01	17/12/2021		Issued for Planning	S0 Work in progress	
P04	11/03/2022		Issued for Planning	S1 Shared - for Co-ordination S2 Shared - for Information S3 Shared - for Review & Comment S4 Shared - for Stage Approval S6 Shared - for Project Information Model S7 Shared - for Asset Information Model D1 Suitable for Costing D2 Suitable for Tender D3 Suitable for Contractor Design D4 Suitable for Procurement An Published - Approved & Accepted Complete Bn Published - Partially signed off with comments CR Published - Construction Record	

CCH ARCHITECTS
Architects • Interior Designers • Masterplanners

Lacken House, Dublin Road, Kilkenny R95 KF34
Tel +353 (0)56 776 1591
E-Mail: info@cch-architects.com

© Drawing copyright CCH Architects Ltd. Not to be copied, reproduced or distributed without prior consent of CCH Architects Ltd.

NOTE: All dimensions to be checked on site. Do not scale this drawing. Use figured dimensions only. To be read in conjunction with all other relevant project drawings and documents including from other consultants.

CLIENT: Lismore Homes Ltd

PROJECT: GA2: Residential Development Baldoyle

stage: **PLANNING**

DWG TITLE: Sector 8B_Fourth & Fifth Floor Plans

status	revision no.	Date	drawing no.
	P04	17/12/21	R. RYAN
project ref.	20003	Scale @ A1	1 : 200